



Final Report

Case#: 17-217
Accessioned: 10/19/17
Report Generated: 02/16/18 @ 11:21 AM by KBB
Results Last Modified: 12/15/17 @ 7:50 AM

Case ID

"[Redacted]" Commerical pet chew

Coordinator
STERN

Sex / Fixed
Not Given /

Age

Unknown Species (Reported As)

Pathology

Addendum 1 Report - Verified: 12/15/17 7:50 AM by TP2

ADDENDUM:

There was a typographical error within the description of slides 5-8 (pink material between rolled material). The sentence "There are several foci of sample and brown crystalline structures within the material" should be as follows:

There are several foci of small brown crystalline structures within the material.

No further tests are pending.

Adam W. Stern, DVM, CMI-IV, CFC, Diplomate ACVP
Clinical Associate Professor

Forensic Pathology

Forensic Consultation Report - Verified: 10/31/17 4:22 PM by TP2

17217 Stern

HISTOPATHOLOGY REPORT:

Submitted is a single sealed package of No-Hide Salmon Chews (Earth Animal). There are two individual products within the packaging. The material is firm and could not be easily unrolled during manipulation. There is pink material between the layers of the rolled product. The rolled product is tan in color. Each roll is 11 cm in width and the roll is 3-4 cm in diameter. The products are 4 mm thick when unrolled.

One product is removed from the packaging and is placed in deionized water to allow for rehydration. The product is immersed within water for approximately 6 hours and is easily unrolled at this point. There is pink gelatinous and friable material that was between the layers of rolled material. Much of this material floats within the water. The rolled material

was tough and not able to be manually pulled apart/torn. The material is easily cut with a scalpel blade. One surface of the rolled material is smooth on one side and irregular on the other side.

SLIDES 1-4, Rolled material (figure 1): Eight sections are examined. The material appears to be composed of streams of eosinophilic material (no observable nuclei) with relatively distinct margins. The material is birefringent using polarized light. The diameter of this material varies (random sampling of measurements 18 um, 26 um, 29 um, and 32 um). Interspersed within the material are multiple clear spaces (artifact of processing vs. empty space within material).

SLIDES 5-8, Pink material between rolled material (figure 2): Four sections are examined. The material examined has no distinct organization and appears to be an accumulation of eosinophilic strands material that are distinct structures or have regions that blend together. The myocytes are not birefringent using polarized light. When individualized the strands of material occasionally have multiple nuclei along the periphery and rarely cross-striations are observed (consistent with skeletal muscle). The myocytes vary in diameter (random sampling of measurements 17 um, 27 um, and 29 um). There are numerous aggregates that are clear and range in size from 5 um to 8 um in diameter and is birefringent using polarized light. There are several foci of sample and brown crystalline structures within the material.

COMMENTS:

The majority of the rolled product appears to be composed of collagen-like material. I am not able to identify any vasculature within the sections examined. Histomorphology does not allow for determination of an origin of this product. A Masson's trichrome stain and desmin immunohistochemical stain might possibly be helpful to further characterize the material within the shell.

The filling material appears to be a mixture of animal product (identification of skeletal muscle) mixed with a filler product (plant-based material?). There are no identifiable blood vessels or supporting connective tissue (likely altered during the processing of this product). A Masson's trichrome stain and desmin immunohistochemical stain might possibly be helpful to further support that this material has skeletal muscle within it.

Additionally comparison to a known chew made of animal hide may be useful to compare to this product.

Please contact me if you would like to perform additional testing.

Adam W. Stern, DVM, CMI-IV, CFC, Diplomate ACVP
Clinical Associate Professor

Histology

Custom Histology Services - Verified: 10/31/17 12:30 PM by TP2

<u>Test</u>	<u>Quantity</u>	<u>Units</u>
Research H & E	11	Slides
Research Embedding	8	Blocks

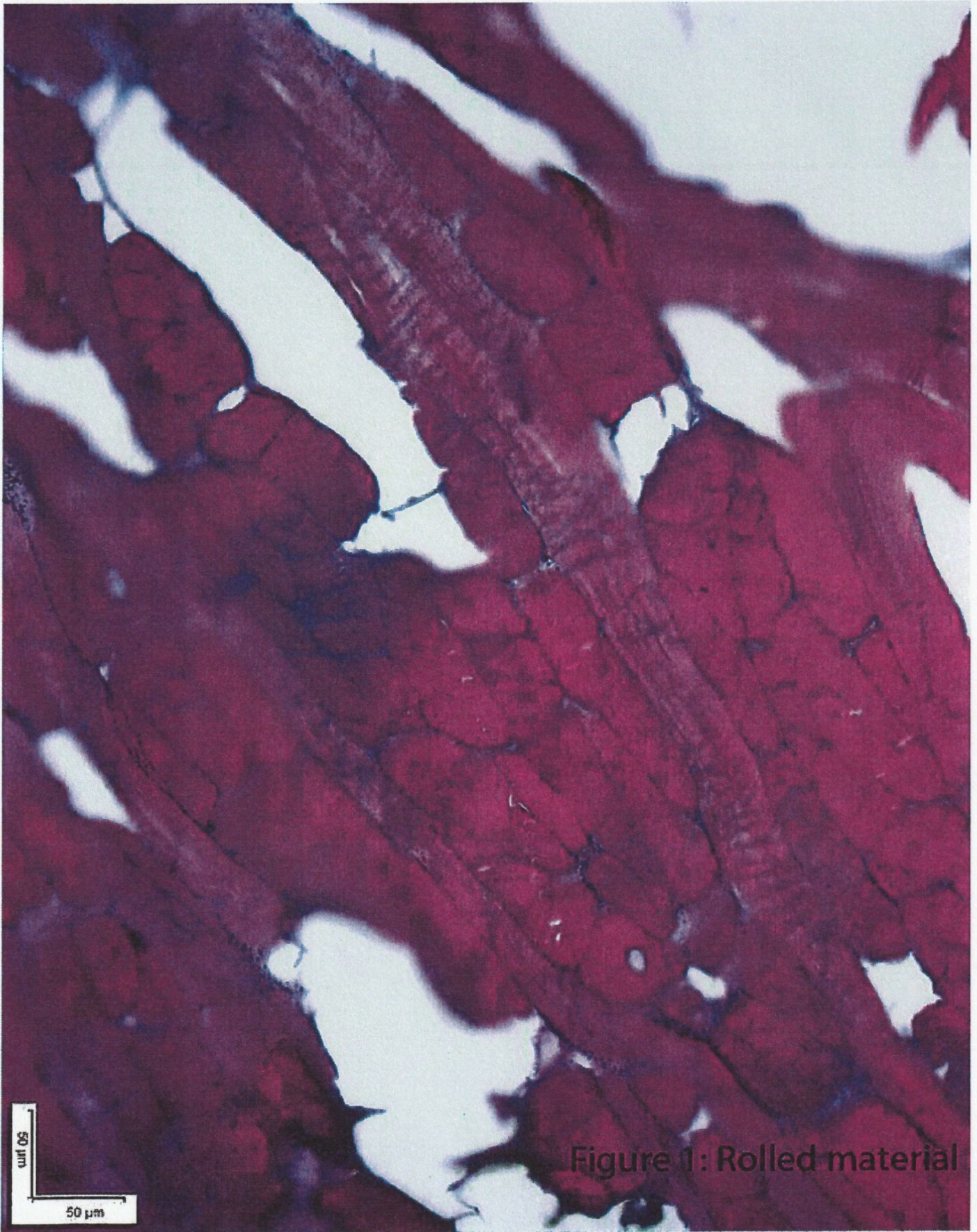


Figure 1: Rolled material



This message is intended for the use of the individual or entity to which it is addressed, and may contain information that is Privileged, Confidential, and exempt from Disclosure Under Applicable Law. If the reader of this message is not the intended recipient, or the employee or agent responsible for delivering the message to the intended recipient, you are hereby notified that any dissemination, distribution, or copying is strictly prohibited.